

Arl3

Catalog Number: 26070

Gene Symbol: ARL3

Description: Anti-Arl3 Mouse Monoclonal Antibody

Background: Arl3 (Arf-like 3) is an Arf family protein. Arl3 binds microtubules to alter specific aspects of cytokinesis. It has been proposed that retinitis pigmentosa 2 functions in concert with Arl3 to link the cell membrane and the cytoskeleton in photoreceptors as part of the cell signaling or vesicular transport machinery.

Immunogen: Recombinant Arl3 protein

Tested Applications: ELISA, WB, IHC, IP

Recommended Dilutions:

ELISA 1:100-1:5000

WB 1:100-1:2000

IHC 1:10-100

Concentration: 1 mg/ml

Host: Mouse

Clonality: Monoclonal

Purity: Purified from ascites

Format: Liquid

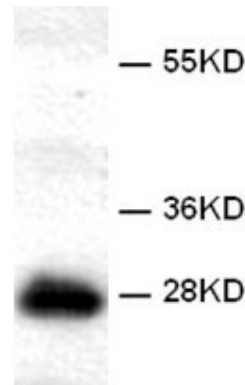
Preservative: No

Constituents: PBS (without Mg^{2+} and Ca^{2+}), pH 7.4, 150 mM NaCl, 50% glycerol

Species Reactivity: Arl3 antibody recognizes Arl3 from vertebrates.

Storage Conditions: Store at $-20^{\circ}C$. Avoid freeze / thaw cycles

Western blot:



WB: Anti-Arl3 mAb

Western blot analysis of recombinant Arl3 proteins.

Purified his-tagged Arl3 protein (Cat.#10152) was blotted with anti-Arl3 monoclonal antibody (Cat # 26070).

FOR RESEARCH USE ONLY. NOT FOR DIAGNOSTIC APPLICATIONS

NewEast Biosciences
1150 First Avenue, Suite 501
King of Prussia, PA 19406

Support:

610-945-2007

info@neweastbio.com

Web:

www.neweastbio.com